



Product Service

CERTIFICATE

No. Z2 17 12 22757 988

Holder of Certificate: HAGS Aneby AB

Grännavägen 7
578 23 Aneby
SWEDEN



Certification Mark:



Product: Combination playing construction

The product was tested on a voluntary basis and complies with the essential requirements. The certification mark shown above can be affixed on the product. It is not permitted to alter the certification mark in any way. In addition the certification holder must not transfer the certificate to third parties. See also notes overleaf.

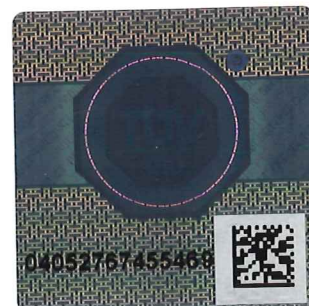
Test report no.: 713124267-2

Valid until: 2022-12-26

Date, 2018-01-12

(Tobias Hofmann)

Page 1 of 2





Product Service

CERTIFICATE

No. Z2 17 12 22757 988

Model(s):**HAGS UniMini:**

Abby; Agen; Ajko; Amiral; Amorette; Amris; Apista;
 Aro; Astrax; Atona; Auro; Aviel; Ballero; Bexy; Brix;
 Brook; Cantoni; Clav; Crano; Crano Sandy 3;
 Crano Sandy 3,2; Crano Sandy 3,2,1; Della; Delvi;
 Dinghy; Dirix; Edmund; Edsberg; Eima; Esper; Eza;
 Faltow; Feim; Firon; Gerba; Ghoron; Gillian; Goop;
 Gyro; Hally; Hubba; Ibbo; Idolte; Imse; Iza; Jarro;
 Jolak; Jorros; Juster; Kaelus; Kalbo; Kalos; Kelus;
 Kerra; Kolea; Kolla; Koppy; Kyri; Laby; Lago; Maliton;
 Merryl; Miza; Morian; Myroc; Nagor; Nebi; Niller; Nordon;
 Occra; Ogrip; Oldram; Omber; Orist; Orvinn; Palon;
 Papproc; Piketo; Port; Pyralli; Qaron; Quron; Ranton;
 Rayne; Rendir; Rilla; Ronder; Rya; Ryl; Salbek; Salle;
 Sandy 1; Sandy 2; Sandy 3; Solux; Tignes; Tylle; Umber;
 Umrain; Vallis; Vindra; Wik; Ydras; Zambi; Zelles;
 Zol; Zyansa

Parameters:

Combination playground systems consist of platforms,
 barrier, guardrail and post in color options

Module dimension: 0.667 m

Steel material: galvanized and powder lacquered.

Post and beam: Laminated timber, steel tubing 70 mm.

Barrier material: Wood, steel, HPL

Floor material: Wood, steel, composite-steel
 (recycled polyethene)

Roof material: Wood, steel, HPL, polypropylene

Chain: Hot galvanized chain with covering
 in solid polyurethane

Slide: Stainless steel slide-surface

Anchoring:

Sunken concrete base

Sunken steel base / frame

Concrete foundation on site

Anchoring on concrete (expansion bolt)

**Tested
according to:**

DIN EN 1176-1:2017

EN 1176-1:2017

DIN EN 1176-3:2017

EN 1176-3:2017

**Production
Facility(ies):**

02994

Page 2 of 2

THF